



**Liz Fields**

Non-Principal Property  
Practitioner  
Registered with PPRA  
(FFC 202 332 585 3)

083 703 0488

liz@harcourtssummerton.co.za

Contact Harcourts Summerton

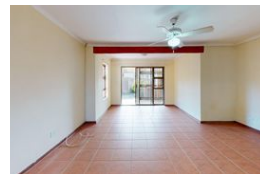
041 581 4363

127 Prospect Road  
Walmer  
Port Elizabeth  
6070



SOLE MANDATE

Web Ref RL47914



### R695,000

2 1 1

**Monthly Bond Repayment** R7,055.84

Calculated over 20 years at 10.75% with no deposit.

**Transfer Costs** R23,730.00 **Bond Costs** R17,680.00

These calculations are only a guide. Please ask your conveyancer for exact calculations.

**Monthly Levy** R1,219.2 **Monthly Rates** R988.1

Kabega Park - R695 000

Calling all handymen & savvy investors!

This spacious 2-bedroom simplex townhouse in the sought-after Eikehof complex is packed with potential! Ideal for those looking to renovate and reap the rewards, this unit offers a blank canvas in a secure, well-managed complex with a communal pool and family-friendly atmosphere.

Step inside to a tiled entrance, melamine kitchen, and open-plan lounge/dining area flowing out through sliding doors to a covered patio with built-in braai - perfect for entertaining. The generous enclosed garden is ideal for kids and dogs to enjoy.

2 Bedrooms | 1 Bathroom (with shower extension)

Manual single garage + extra parking

Dog-friendly complex | Secure living

Close to Baywest Shopping Mall, leading schools, major transport routes & other amenities.

With a little TLC, this home could be transformed...

### Features

**Pets Allowed** Yes

#### Interior

Bedrooms	2
Bathrooms	1
Kitchens	1
Recep. Rooms	2
Furnished	No

#### Exterior

Garages	1
Carports / Parkings	1
Security	Yes
Pool	Yes
Views	False

#### Sizes

Floor Size	77m²
------------	------

