



Liz Fields

Non-Principal Property
Practitioner
Registered with PPRA
(FFC 202 332 585 3)

083 703 0488

liz@harcourtssummerton.co.za

Contact Harcourts Summerton

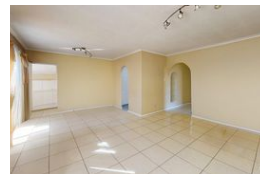
041 581 4363

127 Prospect Road
Walmer
Port Elizabeth
6070



SOLE MANDATE

Web Ref RL43993



R1,499,000

4 3 2

Monthly Bond Repayment R15,472.50

Calculated over 20 years at 11% with no deposit.

Transfer Costs R45,755.00 **Bond Costs** R28,990.00

These calculations are only a guide. Please ask your conveyancer for exact calculations.

Monthly Rates R1,298.5

LORRAINE R1 499 000

PACKED WITH POTENTIAL & IN NEED OF A LITTLE TLC!

Ideally located in the heart of Lorraine, just a short walk from Lorraine Primary School, this spacious 4 bed family home offers unbeatable value in one of Lorraine's most sought-after neighbourhoods. Surrounded by excellent amenities - including shopping centres, restaurants, churches, and major transport routes - convenience is right on your doorstep.

This home has so much to offer! While it could benefit from some modern updates, it offers a solid foundation for any family looking to create their dream home in a prime location.

Step inside to a tiled entrance that flows into a light-filled lounge and dining area, opening onto a front verandah - a perfect spot to enjoy the outdoors. A versatile family room or study leads off the dining area, with access to a private 4th...

Features

Pets Allowed	Yes				
Interior		Exterior		Sizes	
Bedrooms	4	Garages	2	Floor Size	192m ²
Bathrooms	3	Carports / Parkings	2	Land Size	1,089m ²
Kitchens	1	Security	No		
Recep. Rooms	3	Pool	No		
Furnished	No	Views	False		

