



**Ree Maziwisa**

Non-Principal Property  
Practitioner  
Registered with PPRA  
(FFC 202 401 033 404 678)

081 209 8558

ree@harcourtssummerton.co.za

Contact Harcourts Summerton

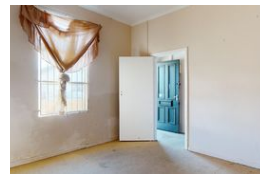
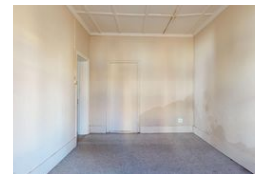
041 581 4363

127 Prospect Road  
Walmer  
Port Elizabeth  
6070



SOLE MANDATE

Web Ref RL48755



### R1,150,000

6 3 1

**Monthly Bond Repayment** R11,481.37

Calculated over 20 years at 10.5% with no deposit.

**Transfer Costs** R32,851.00

**Bond Costs** R25,220.00

These calculations are only a guide. Please ask your conveyancer for exact calculations.

**Monthly Rates** R811.4

Attention Investors – Student Accommodation Goldmine!

2 Properties for the Price of 1!

An incredible investment opportunity awaits in the heart of North End! This double deal offers excellent potential and is ideally located close to key amenities, making it perfect for student accommodation or rental income.

Property Features:

- 6 double Bedrooms
- 3 Comfortable Living Areas
- 4 Bathrooms
- 3 Functional Kitchens
- 1 Single Lock-Up Garage
- Additional Street Parking Available
- Partially Walled Perimeter

Both homes are currently tenanted, with tenants happy to stay on – making this a seamless, income-generating opportunity from day one.

While a touch of TLC may be needed, the potential here is endless. Whether you're looking to expand your portfolio or start one

## Features

**Pets Allowed** Yes

### Interior

Bedrooms	6
Bathrooms	3
Kitchens	3
Recep. Rooms	3
Furnished	No

### Exterior

Garages	1
Carports / Parkings	4
Security	No
Pool	No
Views	True

### Sizes

Floor Size	305m <sup>2</sup>
Land Size	521m <sup>2</sup>

