



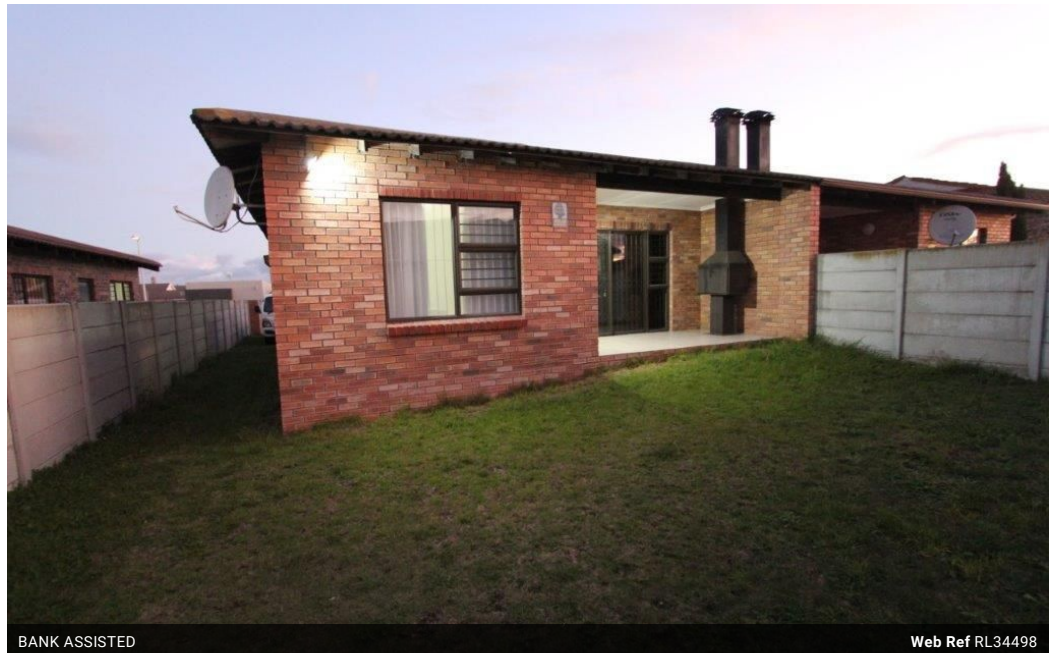
**Caeden Bartosch**  
Non-Principal Property Practitioner  
Registered with PPRA (FFC 202 371 506 18)  
073 776 7915

caeden@harcourtssummerton.co.za

Contact Harcourts Summerton

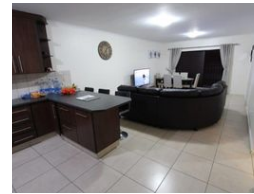
041 581 4363

127 Prospect Road  
Walmer  
Port Elizabeth  
6070



BANK ASSISTED

Web Ref RL34498



### R1,150,000

3 2 1

**Monthly Bond Repayment** R11,870.17  
Calculated over 20 years at 11% with no deposit.

**Transfer Costs** R32,749.00 **Bond Costs** R25,220.00

These calculations are only a guide. Please ask your conveyancer for exact calculations.

**Monthly Rates** R1,381.5

### Charming Family Home in Parsons Ridge

Step into comfort and style with this delightful 3 bedroom home, nestled in the heart of Parsons Ridge. Each bedroom is fitted with built in cupboards, while the main bedroom offers the added luxury of an en-suite featuring a shower, basin and toilet. A separate full guest bathroom includes a bath, shower, basin and toilet, catering perfectly to family and guests alike.

The home's open plan design creates a welcoming atmosphere, seamlessly connecting the spacious living room, dining area and kitchen. The living room extends to an undercover patio, complete with a built in braai - perfect for entertaining or unwinding in the fresh air. The property boasts a generous, pet friendly yard, providing ample space for outdoor activities. The garage is thoughtfully designed with plumbing for a washing machine and there is plenty of...

### Features

**Pets Allowed** Yes

#### Interior

Bedrooms	3
Bathrooms	2
Kitchens	1
Recep. Rooms	2
Furnished	No

#### Exterior

Garages	1
Carports / Parkings	2
Security	Yes
Pool	No
Views	False

#### Sizes

Floor Size	118m <sup>2</sup>
Land Size	675m <sup>2</sup>

