



**Liz Fields**

Non-Principal Property  
Practitioner  
Registered with PPRA  
(FFC 202 332 585 3)

083 703 0488

[liz@harcourtssummerton.co.za](mailto:liz@harcourtssummerton.co.za)

Contact Harcourts Summerton

041 581 4363

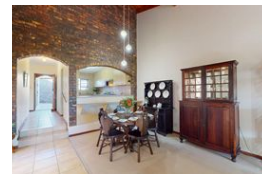
127 Prospect Road  
Walmer  
Port Elizabeth  
6070

UNDER OFFER



SOLE MANDATE

Web Ref RL44507



### R1,030,000

3 2 1

**Monthly Bond Repayment** R10,456.86

Calculated over 20 years at 10.75% with no deposit.

**Transfer Costs** R32,749.00

**Bond Costs** R25,220.00

These calculations are only a guide. Please ask your conveyancer for exact calculations.

**Monthly Levy** R1,567.6

**Monthly Rates** R909.5

Providentia - R1 030 000

Charming Townhouse in Sought-After Suburb!

Welcome to this low-maintenance facebrick townhouse, ideally situated in the leafy, well-established suburb of Providentia. Enjoy the convenience of being close to top-rated schools, shopping centres, restaurants, and medical facilities.

Perfect for first-time buyers or those looking to downsize, this home offers a secure lock-up-and-go lifestyle within a small, pet-friendly complex.

Step through the enclosed front garden onto the front brick patio and into the tiled entrance hall. The open-plan living and dining area boasts double-volume ceilings, creating a spacious, airy atmosphere. The adjoining melamine kitchen is open plan and includes a breakfast counter, space for laundry appliances, and comes fitted with an under-counter oven and hob.

The home features three well-sized...

## Features

Pets Allowed		Yes			
Interior		Exterior		Sizes	
Bedrooms	3	Garages	1	Floor Size	112m²
Bathrooms	2	Carports / Parkings	1		
Kitchens	1	Security	Yes		
Recep. Rooms	2	Pool	No		
Furnished	No	Views	True		

