



**Ineke Ferreira**

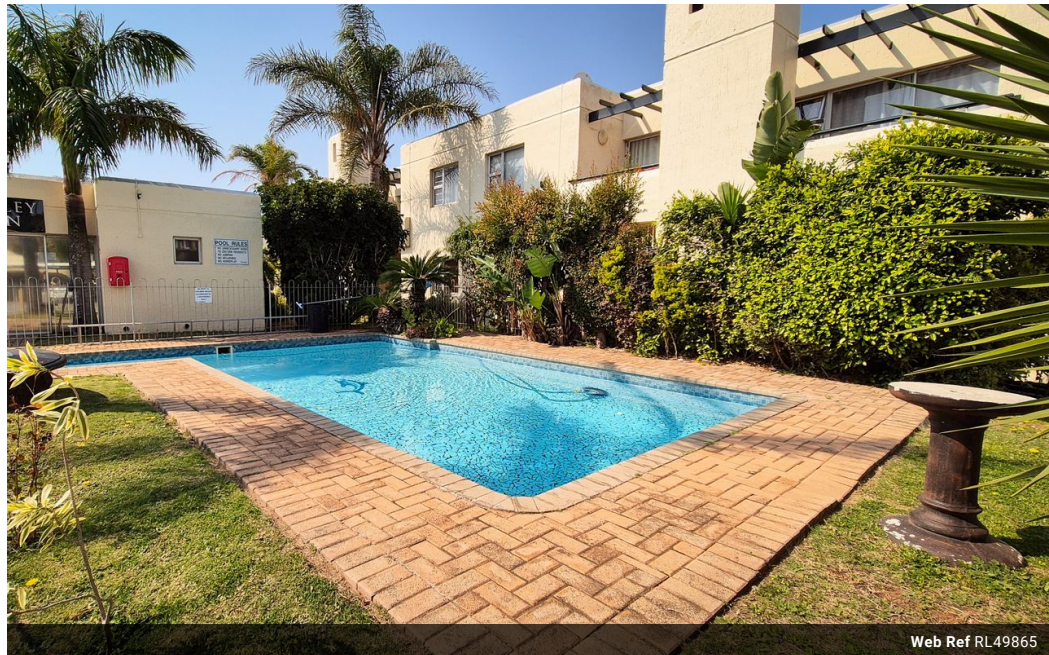
076 470 6307

ineke@harcourtssummerton.co.za

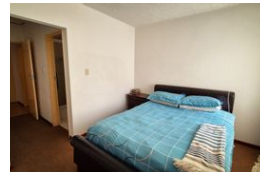
Contact Harcourts Summerton

041 581 4363

127 Prospect Road  
Walmer  
Port Elizabeth  
6070



Web Ref RL49865



### R825,000

2 2

**Monthly Bond Repayment** R8,236.63

Calculated over 20 years at 10.5% with no deposit.

**Transfer Costs** R28,334.00 **Bond Costs** R21,450.00

These calculations are only a guide. Please ask your conveyancer for exact calculations.

**Monthly Levy** R1,412.2 **Monthly Rates** R829.7

### Stylish 2-Bedroom Townhouse in South End | R825 000

Welcome to this well-maintained 2-bedroom townhouse nestled in the heart of South End, located within a secure and beautifully maintained complex.

This well-kept home features:

- 2 Spacious bedrooms with built-in cupboards
- 2 Bathrooms for added convenience
- A neat, open-plan kitchen and living area
- A private balcony with built-in braai overlooking a tropical courtyard – perfect for entertaining!
- Secure shaded parking
- Access to a sparkling communal pool

Ideal for first-time buyers, young professionals, or as a solid investment opportunity. Don't miss out on this gem offering comfort, convenience, and peace of mind - all at an affordable R825, 000.

Contact me today to arrange a viewing!

### Features

#### Interior

Bedrooms	2
Bathrooms	2
Kitchens	1
Recep. Rooms	1
Furnished	No

#### Exterior

Carports / Parkings	1
Security	Yes
Pool	Yes
Views	False

#### Sizes

Floor Size	71m²
------------	------

